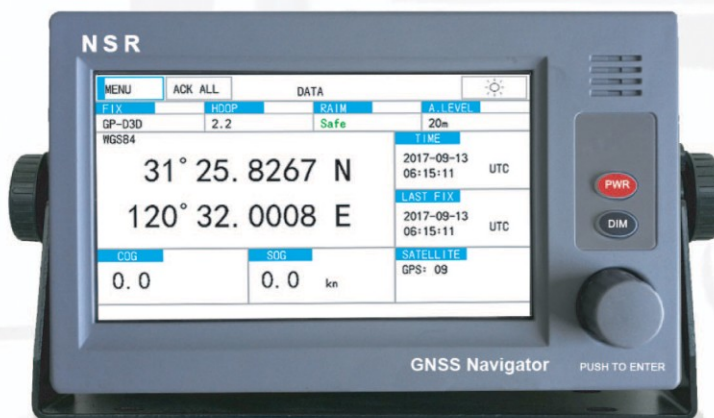


NGR-1000/NGR-3000

GPS EQUIPMENT

NSR's new generation of IMO GPS:

- 7 inch color LCD
- Touch screen operation
- Port for INS connection
- Type approval with MED, CCS, VR



- Comprehensive navigation data displays.
- Storage for up to 999 waypoints and 30 routes.
- 7 inch, color LCD, touch screen operation with adjustable contrast and brilliance.
- Dedicate port for INS connection.
- 2 GPS data outputs.
- A DGPS beacon receiver (external) may be connected to the NGR-3000 to add DGPS function.
- Meets the requirements of relative IMO and IEC regulation & standards, including IMO MSC.112 (73), IEC61108-1, etc.



SPECIFICATIONS

● GPS RECEIVER

Receiving System: 50 channels parallel (GPS)
 Rx Frequency: 1575.42 MHz
 Rx Code: C/A code
 Position Accuracy: Approx. 10m (GPS), 95% of the time,
 horizontal dilution of precision (HDOP) ≤ 4
 Tracking Velocity: 999 kts
 Position-fixing Time: Warm start: 15 seconds,
 Cold start: 120 seconds
 Position Update Interval: 1 second

● DISPLAY SECTION

Display: 7 inch, color LCD, touch screen operation
 Fix Mode : GPS/GLONASS/Beidou
 Alerts: Lost of Position, HDOP>4, DGPS lost

● INPUT/OUTPUT DATA

Output Data: RS422, max 3 ports,
 Baud Rate 4800/9600/19200 bps
 Sentences: GNS, GBS, GGA, RMC, VTG, ZDA, DTM
 INS connection: INS IN/INS OUT, RS422
 Input Data: DGPS RTCM SC-104

● POWER SUPPLY

12-24 VDC, 0.25-0.50 A

● ENVIRONMENT CONDITION

Ambient Temperature: Antenna Unit: -25°C to +70°C
 Main Unit: -15°C to +55°C
 Relative Humidity: 95% at 40°C
 Water Proofing: Antenna Unit: IEC60529 IPX6
 Main Unit: IEC60529 IP22

● OTHERS

Size: 145 (H) × 264 (W) × 80 (D) mm
 Weight: 1.25kg (main unit)

EQUIPMENT LIST

● STANDARD

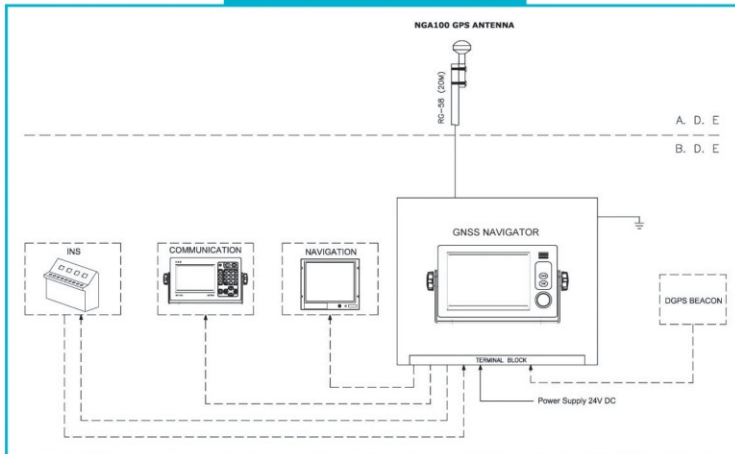
- GNSS Navigator 1 pc
 - GNSS Antenna with Cable 1 pc
 - Installation Materials 1 set

● OPTIONS

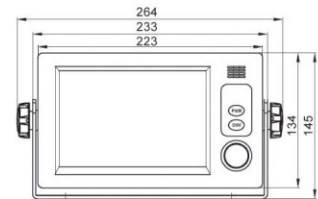
- DGPS Beacon 1 pc
 - Flush Mount Brackets 1 set
 - NMEA Distribution Box 1 pc
 - AC/DC PSU 1 pc



SYSTEM DIAGRAM

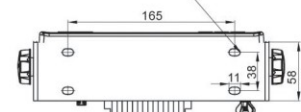


SIZE DIMENSION



FRONT VIEW

4-7x11 SLOT, FITTING HOLE



BOTTOM VIEW